

**Dr Rinat Ben-Noon,**  
Ph.d, Social planner, lecturer and  
researcher in the field of social and  
physical infrastructure, for an age-  
friendly city

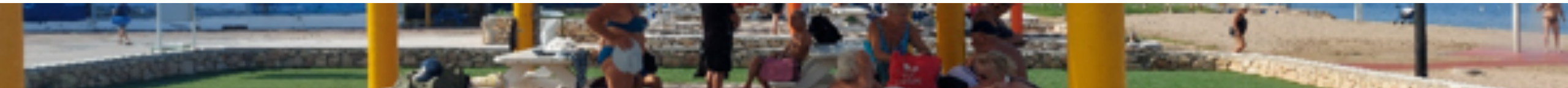
 @agileageing @isostandards  agileageingalliance #agileageing #bettertogether

# Master planning for age-friendly multigenerational neighborhoods

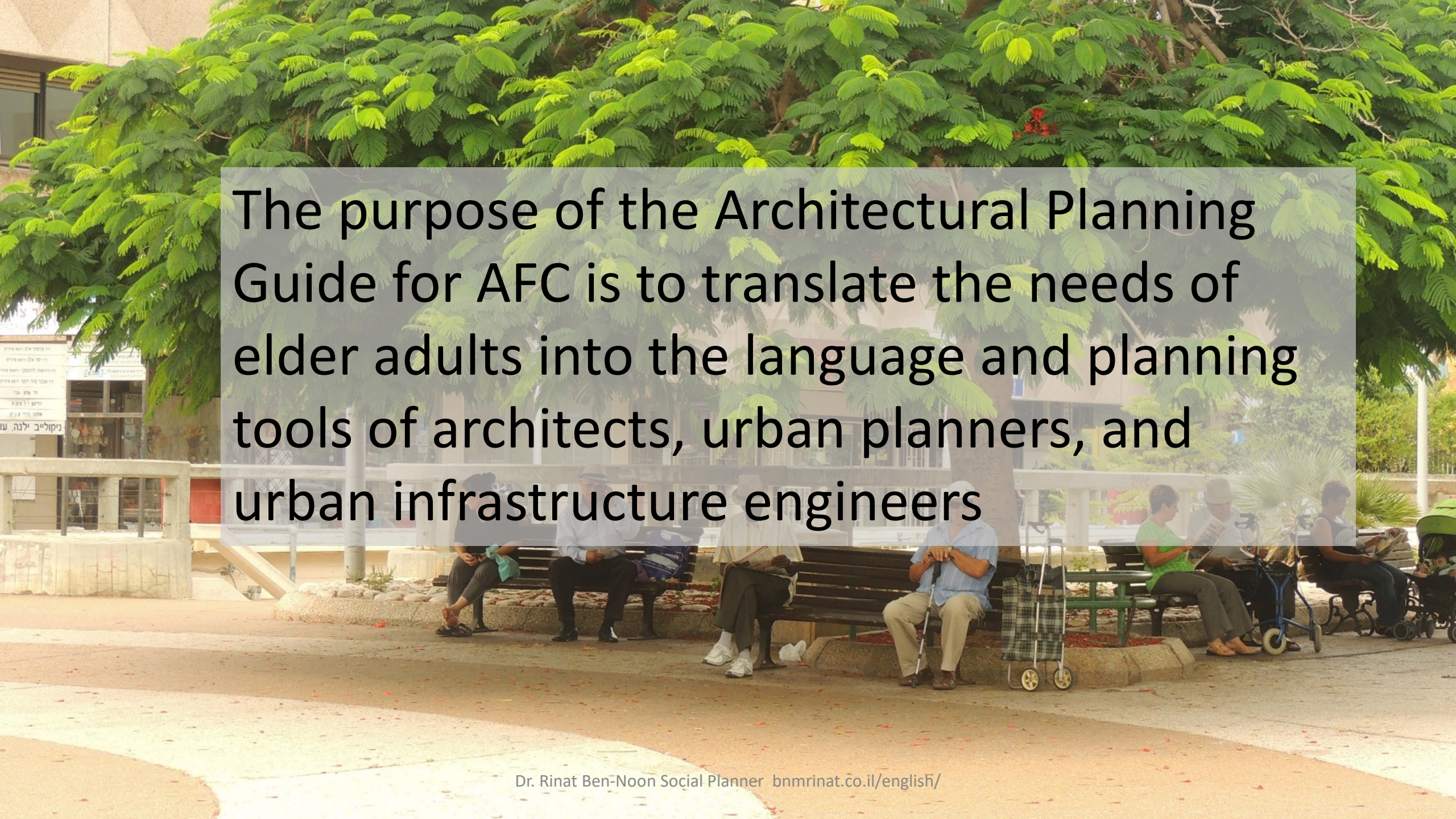
Architectural planning guide

AAA ISO Ageing Societies Leaders Forum (2) January 28 th 2021

**Dr. Rinat Ben-Noon**  
**Israel**





A photograph of a park scene with several elderly people sitting on a wooden bench. A large, leafy tree dominates the background. A semi-transparent text box is overlaid on the image. In the background, a building with Hebrew signs is visible. One sign reads 'במקום ילנה עו' (In the place of Ilana, do) and another mentions 'הרמטק' (Heremak).

The purpose of the Architectural Planning Guide for AFC is to translate the needs of elder adults into the language and planning tools of architects, urban planners, and urban infrastructure engineers



## Multidisciplinary joint work: Gerontology and Planning

A combination of knowledge from the field of gerontology, inspire projects from around the world, planning principles for aging in the professional literature, with local architectural knowledge



# Why should we plan for elder adults?

- The importance of the immediate living environment
- Connectivity and mobility
- Familiarity and Locality feeling

Nevertheless, there is no planning just for elderly adults, the elderly needs should be integrated in the multi-generational neighborhood



# Planning Age-friendly multigenerational neighborhoods

The physical environment in a multi-generational neighborhood should support the efforts of its residents to maintain their independence and daily routine, throughout their life span, in the place where they chose to grow up and grow old





# Planning guide for Age Friendly City: Fields Of Work

<b>Age friendly Neighborhood planning</b>	<b>Street and public space design</b>	<b>Models of housing</b>	<b>Allocations of public areas</b>
Accessibility and mobility	Places and elements in the sidewalk	Design of apartments and residential buildings	Life Span Program
Dense- multi-junction road system	Accessibility	Connecting the building to the street and viewing area	Location of services
Mixed-Use Zoning	Planning of intersections and crossings	Planning infrastructure for innovative housing models for old age	Vertical combination
Distribution of service and shopping centers			





1. The need: Viewing space; on the seam line between the private and the public

Older people create for themselves a place on the seam line between the private and the public. A window or balcony overlooking the street, a “living room” at the entrance to a residential building, or a bench on the street, Near Home



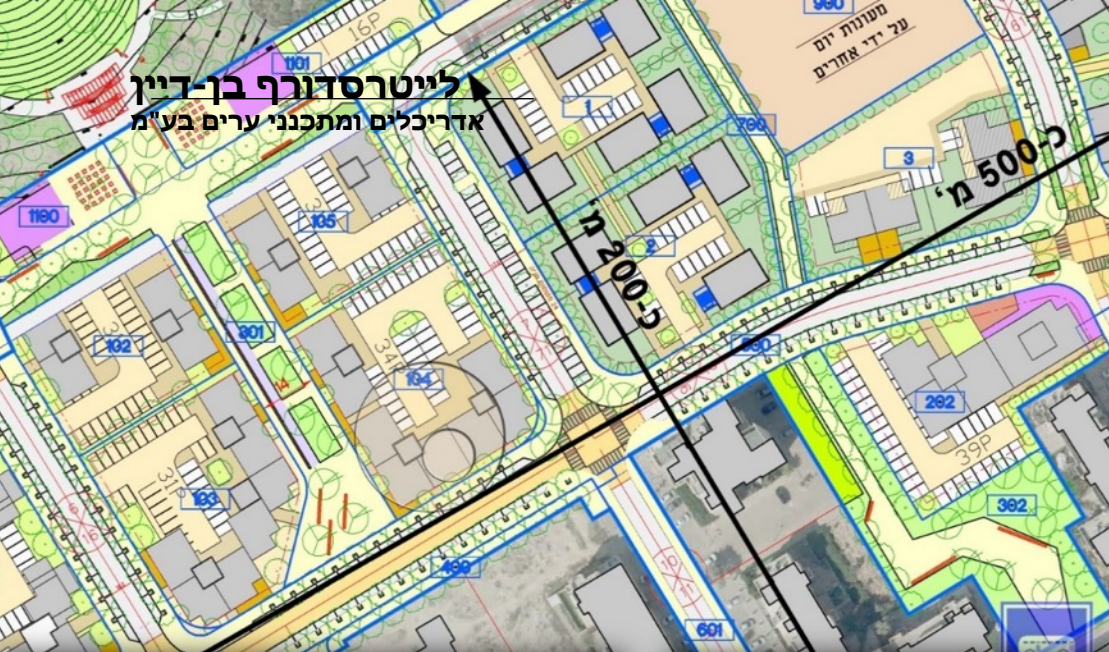
Viewing space; on the seam  
line between the private and  
the public

**Outline instructions for a window or  
balcony:**

“Each apartment will have a large window  
or balcony that allows convenient eye  
contact with the outside. Facing a social  
occurrence, such as the entrance to a  
residential building, street, commercial  
center, and alike”







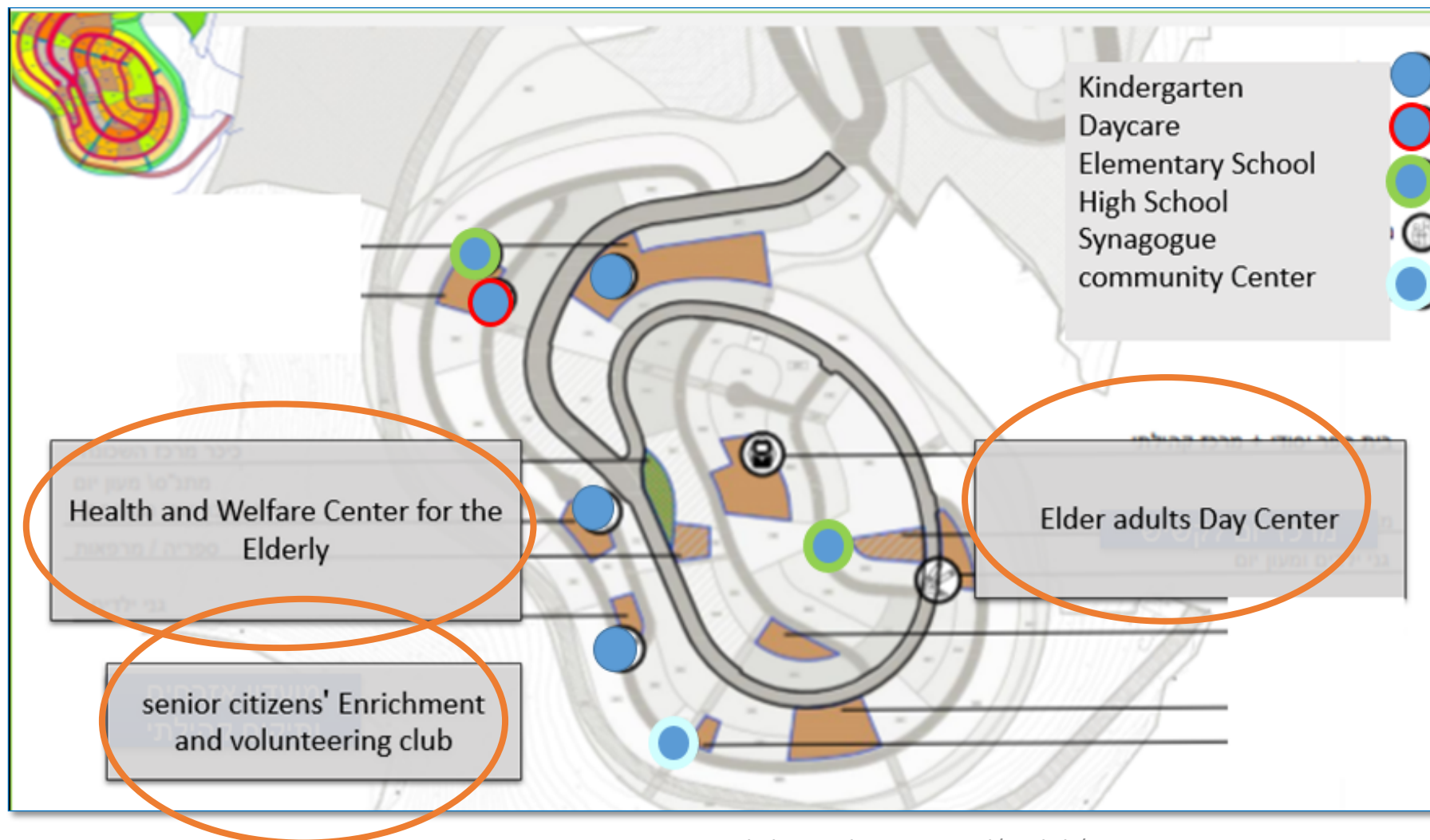
## Age-friendly neighborhood

Viewing's spaces - the connecting between the private and the public

- Placing a seating areas at the building's entrances
- Maintaining eye contact between the entrance of a building and the street



# Life span Programme for public spaces





Israel, July 2020, after the first quarantine,  
Older adults "rebels" in the instructions, in a neighborhood cafe

