

SMART MULTIGENERATIONAL NEIGHBOURHOODS PILOT 2 EUROPE

Mac MacLachlan, Professor of Psychology and Social Inclusion
AL&L Institute Maynooth University (SHAPES lead)

Dr. Sonja Grigoleit, Deputy Head of Business Unit Public
Technology and Innovation Planning (TIP) Fraunhofer

Evert-Jan Hoogerwerf, Head of the Assistive Technology
AIAS Bologna onlus.

 @agileageing @isostandards  agileageingalliance #agileageing #bettertogether

AAA ISO AGEING SOCIETIES LEADERS FORUM | 28TH JANUARY 2021



In association with



**Smart and Health Ageing
through People Engaging in
supportive Systems**



S H A P E S

AAA ISO LEADERS FORUM

28th of January

SHAPES – Coordinator

Presenter: Mac MacLachlan

Director, ALL Institute, Maynooth University

Clinical Lead, Disability Services, Irish Health System

R&I Lead, WHO Global Cooperation on Assistive Technology (GATE) Programme

ABOUT SHAPES



- The SHAPES Innovation Action (IA) intends to build, pilot and deploy a large-scale, EU-standardised open platform.
- The integration of a broad range of technological, organisational, clinical, educational and societal solutions seeks to facilitate long-term healthy and active ageing and the maintenance of a high-quality standard of life.



SHAPES Digital Solutions: Include assistive robots, eHealth sensors and wearables, Internet of Things (IoT)-enabled devices and mobile applications.



SHAPES Ecosystem: A network of relevant users and key stakeholders working together to scale-up Platform and digital solutions.



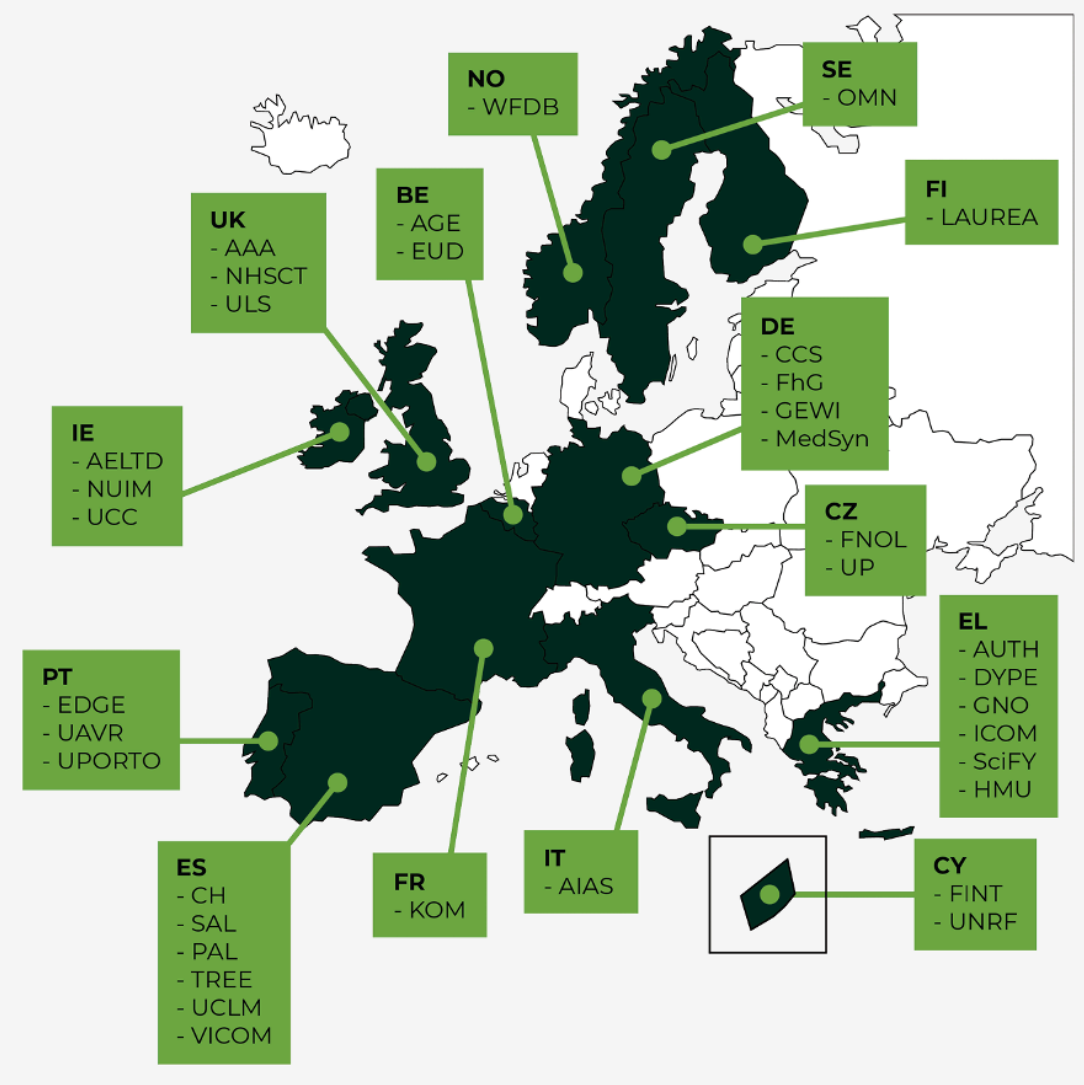
SHAPES Marketplace: Seeks to connect demand and supply across H&C delivery, and to facilitate the co-creation of affordable, effective and trustworthy solutions.



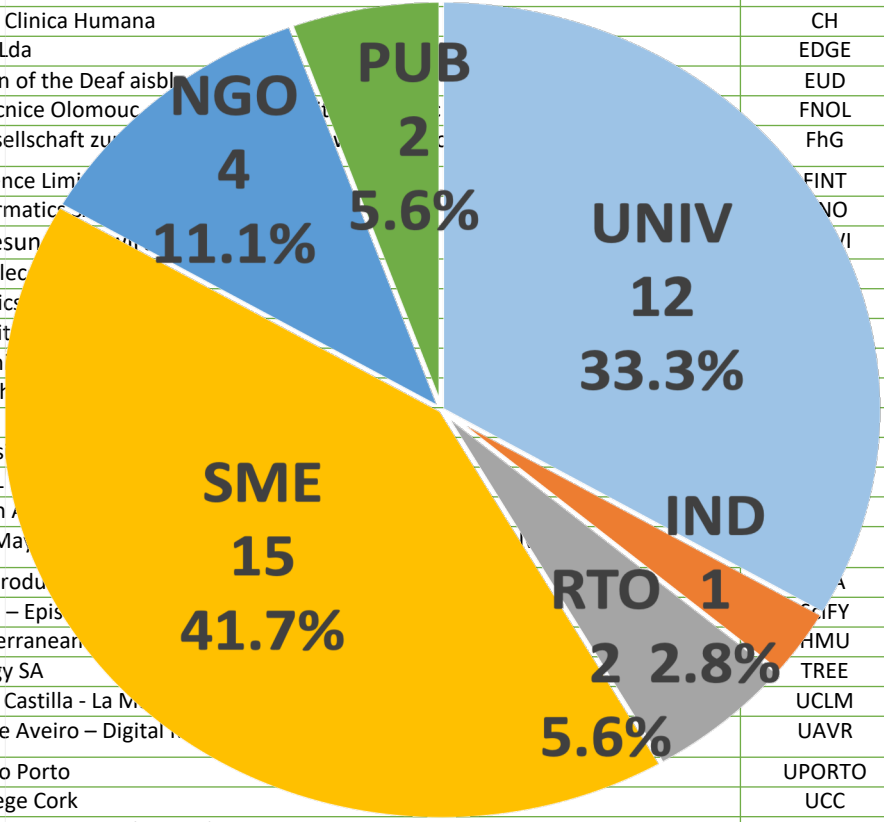
SHAPES Recommendations: Provide guidelines, a roadmap and an action plan, including a set of priorities dedicated to standardisation, to support key EU stakeholders to foster the large-scale deployment and adoption of digital solutions and new integrated car services in Europe.



SHAPES Partners



No.	Participant organisation legal name	Short name	Country
1	National University of Ireland Maynooth	NUIM	IE
2	Access Earth Limited	AELTD	IE
3	AGE Platform Europe	AGE	BE
4	Associazione Italiana Assisteza Spastici Provincia di Bologna onlus	AIAS	IT
5	Aristotelio Panepistimio Thessalonikis – Aristotle University of Thessaloniki	AUTH	EL
6	Carus Consilium Sachsen GmbH	CCS	DE
7	Clinika de Kay - Clinica Humana	CH	ES
8	EDGENEERING Lda	EDGE	PT
9	European Union of the Deaf aishl	EUD	BE
10	Fakultni Nemocnice Olomouc	FNOL	CZ
11	Fraunhofer Gesellschaft zur	FhG	DE
12	Future Intelligence Limi	FINT	CY
13	GNOMON Informatio	GNOM	EL
14	Institut für Gesun	ICOM	DE
15	Intracom SA Telec	INTRACOM	EL
16	KOMPAL Robotics	KOMPAL	FR
17	Laurea Universit	LAUREA	FI
18	MedicalSyn Gm	MEDSYN	DE
19	Northern Health	NHSCT	UK
20	Omnitor AB	OMN	SE
21	Palacký Univers	PAL	CZ
22	PAL Robotics SL	PAL	ES
23	Regional Health A	REGHEALTH	EL
24	Residencia de Ma	RESIDENCIA	ES
25	Rock Couture Produ	ROCK	UK
26	Science for You – Epis	SCIFOR	EL
27	Hellenic Mediterran	HMM	EL
28	Tree Technology SA	TREE	ES
29	Universidad de Castilla - La M	UCLM	ES
30	Universidade de Aveiro – Digital	UAVR	PT
31	Universidade do Porto	UPORTO	PT
32	University College Cork	UCC	IE
33	University of Nicosia Research Foundation	UNRF	CY
34	University of Ulster	ULS	UK
35	VICOMTECH	VICOM	ES
36	World Federation of the Deafblind	WFDB	NO



This project has received funding from the European Union’s Horizon 2020 research and innovation programme under grant agreement No 857159



SHAPES OBJECTIVES

- ✓ To build and deliver the innovative European-led **SHAPES Platform**, providing a broad range of interoperable solutions to improve the health, wellbeing and independence of older individuals, while enhancing the long-term sustainability of H&C systems in Europe.
- ✓ To create, enlarge and consolidate the **SHAPES Ecosystem** for active and healthy ageing allowing stakeholders to exchange knowledge and expertise, identify current and future solutions for active and healthy ageing, provide mutual advice, training and support and exploit collective knowledge for social and commercial purposes.
- ✓ To promote the adoption of standards in the EU field of integrated care of older individuals, and the identification of standardisation priorities to facilitate the deployment of open and interoperable Platforms.

EXPECTED IMPACTS

- ✓ A European-led platform for smart, healthy and independent living at home.
- ✓ Increased competitiveness of the European ICT industry, through enhanced interoperability, best practices and financing models and scalable markets.
- ✓ Links and synergies between Member States and regional initiatives.
- ✓ Improved evidence-based efficiency of health and care systems with demonstrated added-value of underlying technologies.
- ✓ Improved quality of life and health for involved users and carers, with demonstrated added-value of underlying technologies.
- ✓ User-centered, validated and innovative solutions addressing accessibility, privacy, security, vulnerability, liability and trust in connected data spaces.



Take Homes

- Start from the **lifeworld** of older people
- **How** do people want to live?
- **What** eco-culture needs to exist to support good living?
- **Technology** does not provides “solutions”; but the way in which people use technology may enrich and support them; *or it may not.*
- People live in interacting **systems** – social, clinical, technical, legal – research should embrace this, not overly simplify it.
- Never stop co-designing **vision**



**Smart and Health Ageing
through People Engaging in
supportive Systems**



S H A P E S

AAA ISO LEADERS FORUM

28th of January

SHAPES – Pan European Pilot Campaign

Presenter: Dr. Sonja Grigoleit



What is the SHAPES pilot campaign?

A validation of the SHAPES capabilities and the benefits to its users



with 450 participants at 14 pilot sites,

including older persons, formal & informal caregivers and health care provider in general,



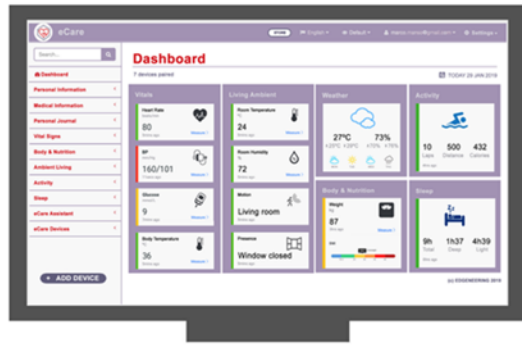
in 10 different countries,



involving 2000 persons overall.



What do we want to test during the pilots?

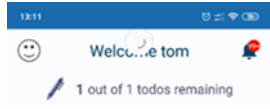


Remote health and wellbeing monitoring

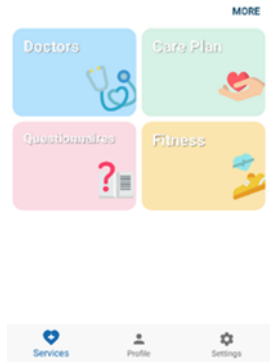
Risk detection and warning



Night surveillance
(in nursing homes)



Monitoring older persons when travelling abroad

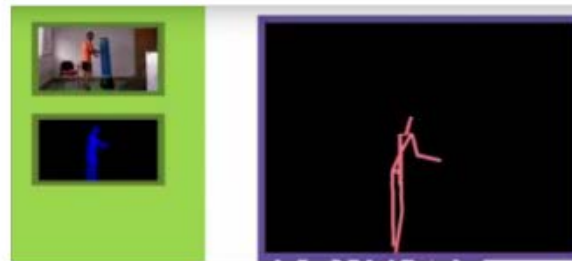


Digital assistants (reminders, medical adherence, (video) communication, community support)

Improving accessibility

Training and support for informal caregivers

Rehabilitation training
(e.g. orofacial musculature, gait rehabilitation)



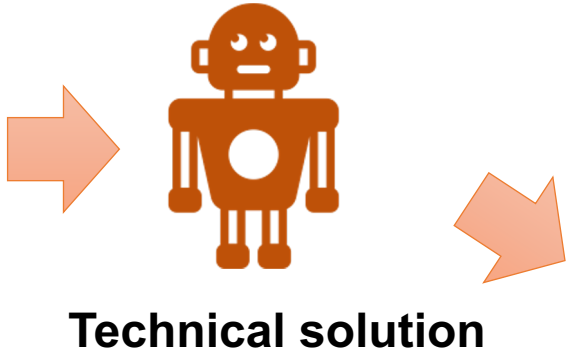
Cognitive training





How do we organize the pilot campaign?

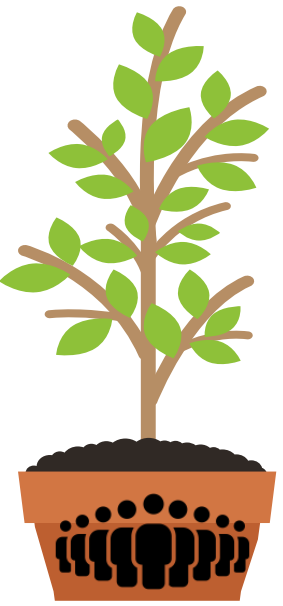
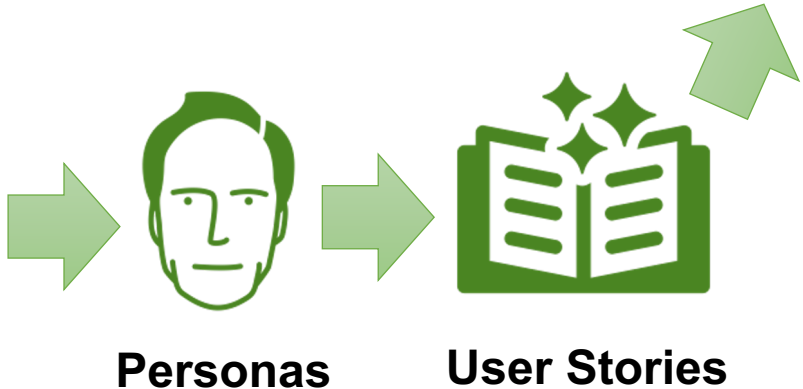
**SHAPES
technologists,
engineers**



**SHAPES pilot
sites**



**SHAPES social
scientists,
anthropologists,
psychologists**





**Smart and Health Ageing
through People Engaging in
supportive Systems**



S H A P E S

AAA ISO LEADERS FORUM

28th of January

SHAPES – Pan European Pilot Campaign

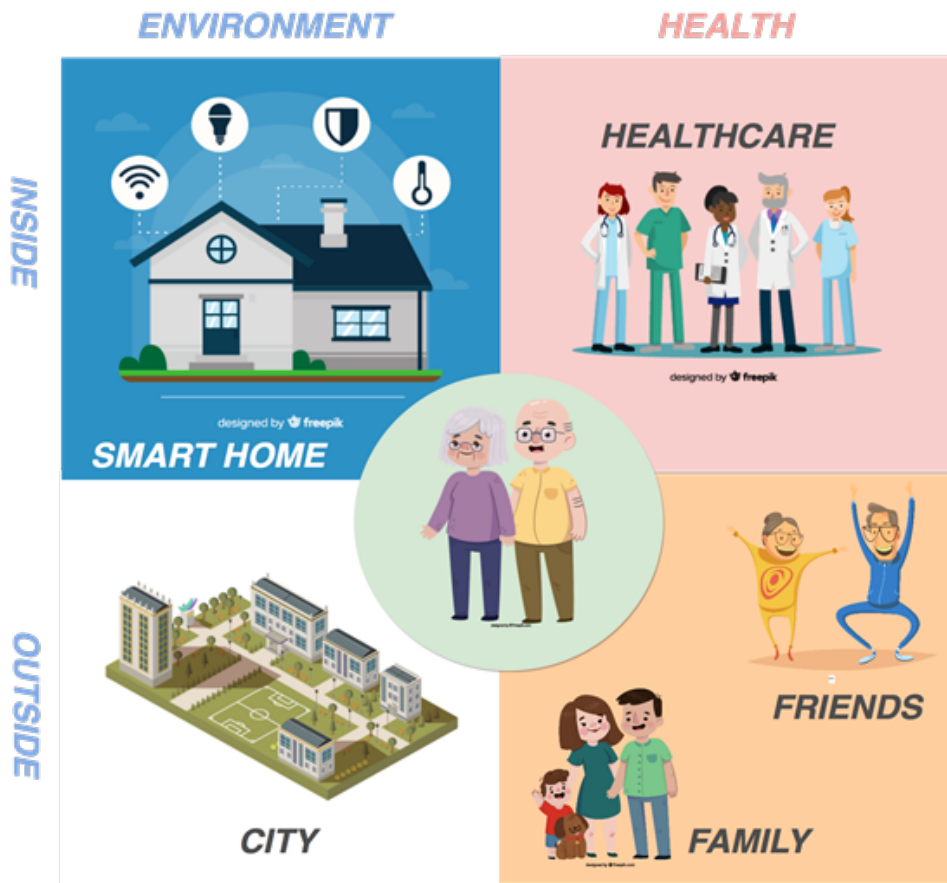
Presenter: Evert-Jan Hoogerwerf

WeCareMore Centre of AIAS Bologna onlus

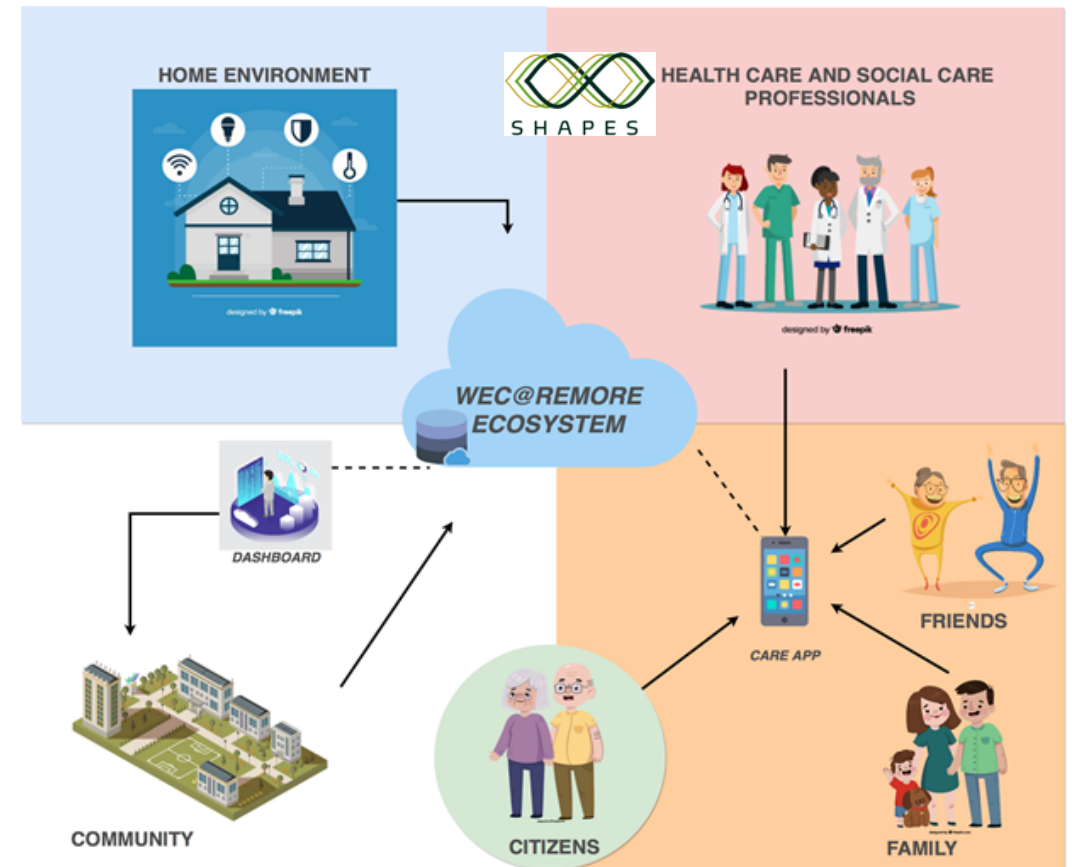


SHAPES & the WeCareMore centre: Technology enabled independent & integrated living

Domains



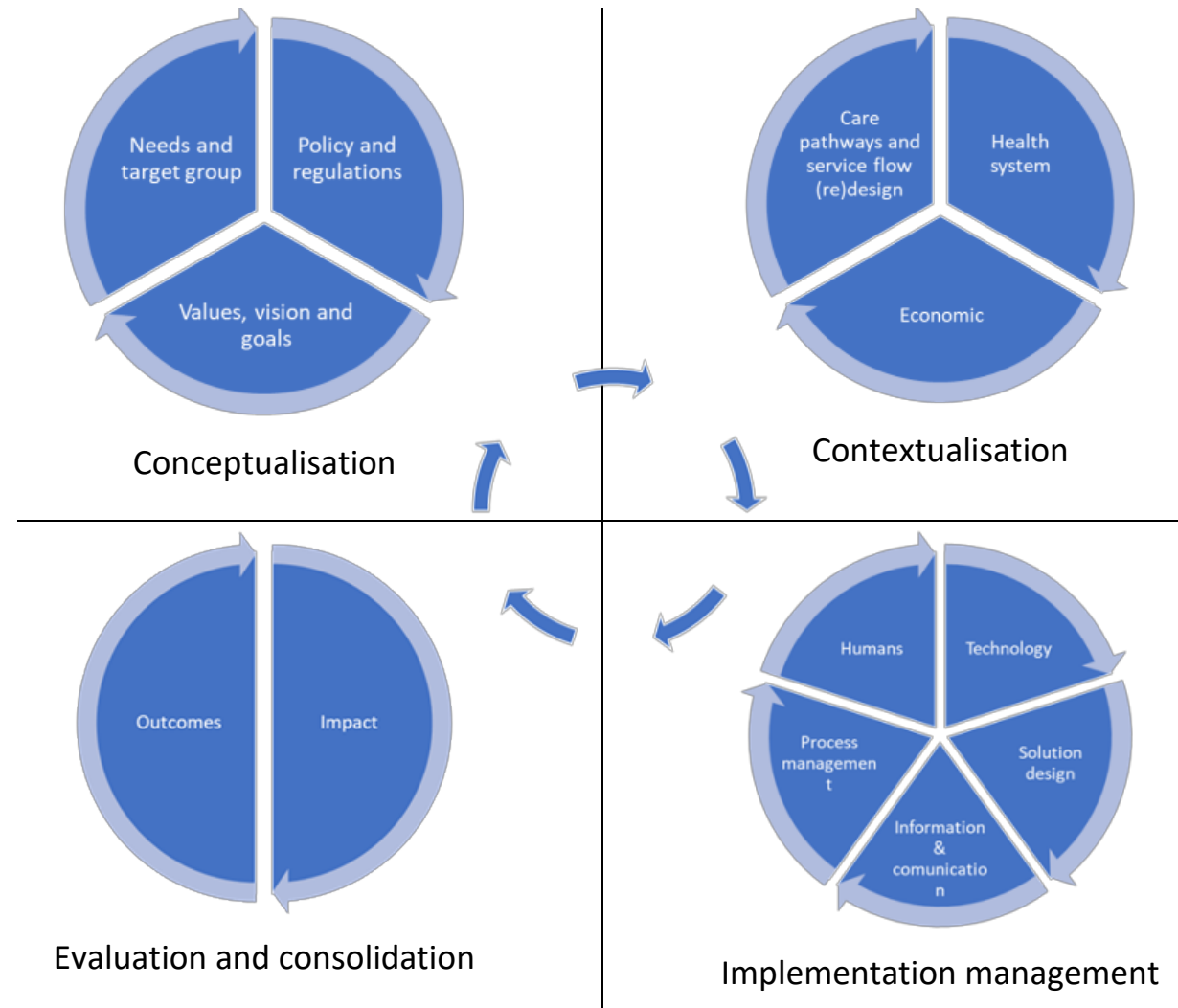
Technologies





Technology adoption: lessons learned

- Original research based on case reports
- 13 technology adoptions in integrated care across Europe analysed
- 200+ relevant factors to consider



Compatibility core items



Conceptualisation

- The envisaged solution **responds to the retrieved needs of the target users**
- The envisaged solution is compatible with relevant policy frameworks
- The envisaged solution **reflects the values of Integrated Care**

Contextualisation

- The solution is **compatible with existing Integrated Care pathways**
- The solution **enables new Integrated Care pathways**
- The solution is compatible with the existing Health and Care system
- The solution is compatible with the existing funding models

Implementation

- The build solution is compatible with the skills of the users
- The build solution is compatible with the expectations of the users
- The build solution **is compatible with the environment of use**
- The build solution is compatible with other technologies
- The build solution is compatible with legislation/regulations (e.g., safety, privacy, etc.)
- The build solution is compatible with the care management procedures

Evaluation

- The solution is compatible with the evaluation practices in the organization
- The solution **can cope with larger numbers of users**
- The solution is **interoperable with different care contexts and cultures**

**THE FUTURE OF MULTIGENERATIONAL
NEIGHBOURHOODS AND COMMUNITIES**



REFLECTIONS

From 3  s



SHAPES

AAA ISO LEADERS FORUM



WHO POLICY: STANDARDS & CONTEXTS – GLOBAL HEALTH, RIGHTS AND WELLBEING



HEALTH & SOCIAL CARE SERVICES: WE CAN SEE MORE FROM MULTIPLE PERSPECTIVES – SHARING BEST & GOOD PRACTICES



RESEARCH: COLLABORATING ON NEW STANDARDS – AS PROCESS AND OUTCOME.