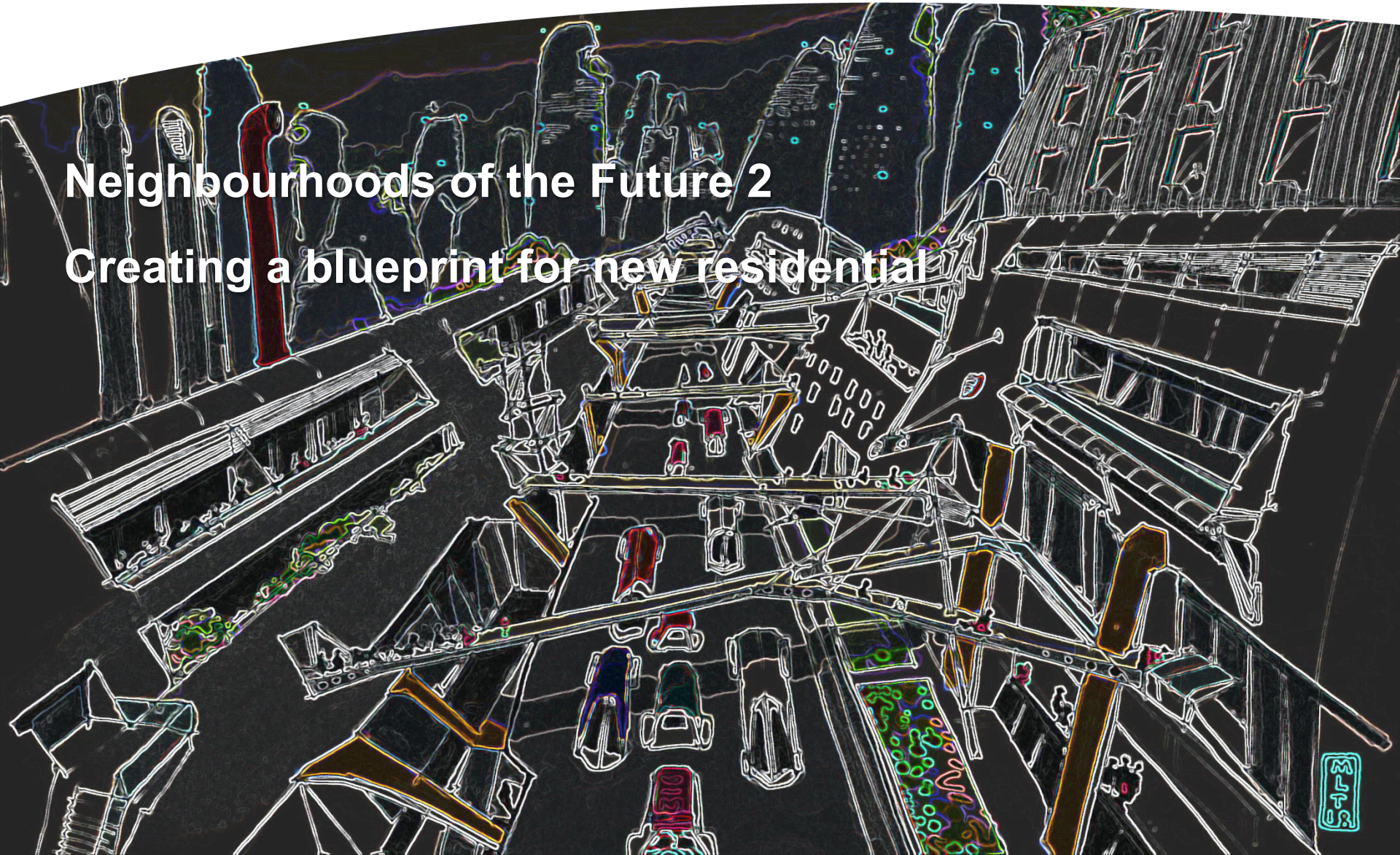


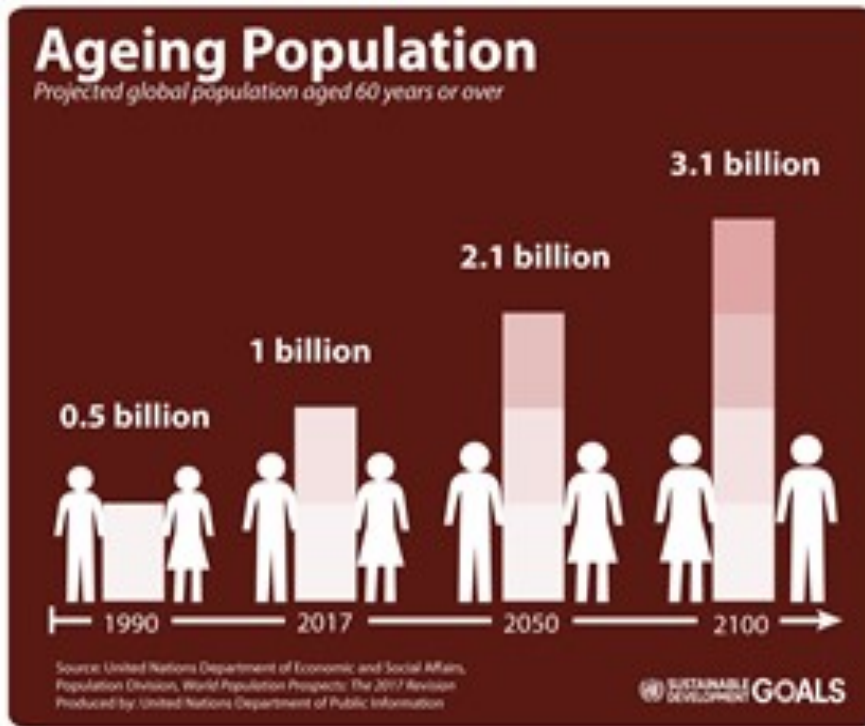
# Neighbourhoods of the Future 2

## Creating a blueprint for new residential

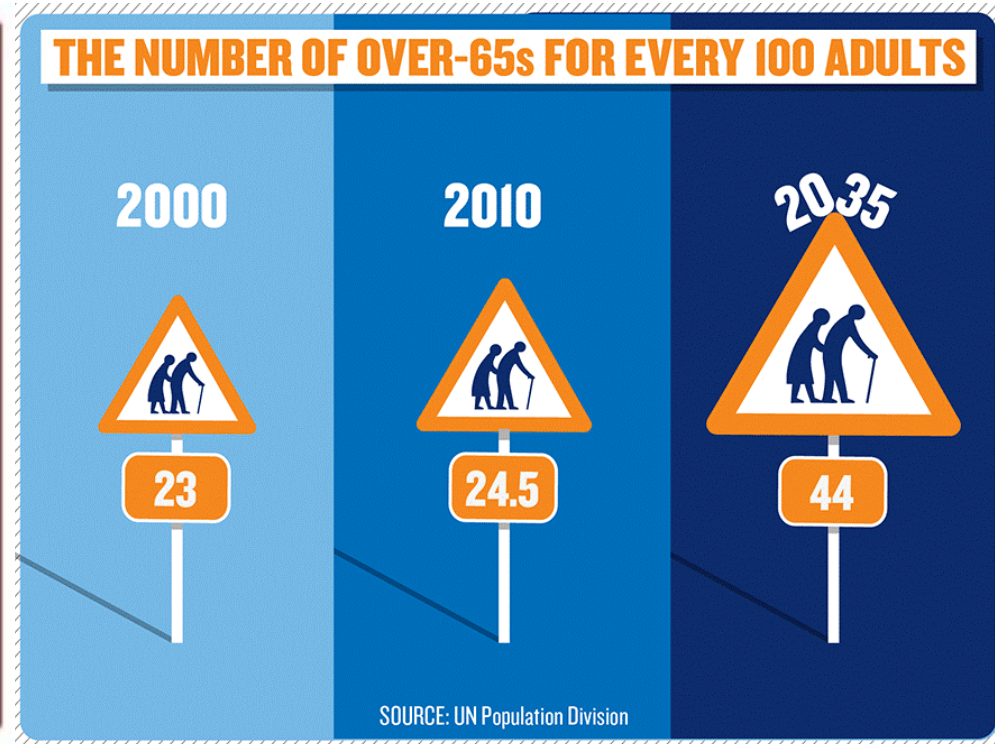




## The Challenge ( Opportunity – same view different perspective)



The increased number



The increased mix

Tata Steel, working in partnership with the Agile Ageing Alliance & its membership, aims to reimagine our Neighbourhoods of the Future

## Why Tata Steel are proud to be part of this movement – it's in our DNA

### On urban design –

“Be sure to lay wide streets planted with shady trees, every other of a quick-growing variety. Be sure that there is plenty of space for lawns and gardens. Reserve large areas for football, hockey and parks. Earmark areas for Hindu temples, Mohammedan mosques and Christian churches”



### On business ethics -

“In a free enterprise, the community is not just another stakeholder in business, but is in fact the very purpose of its existence”

# What does the future have in stall for us all?

## The future of society

- Urbanisation
- Ageing population
- Population movement and growth
- Sharing economy
- Circular Economy
- SMART solutions
- Changing household structures
- Food and Water efficiency

## The future of construction

- Cities
- Digitisation
- Residential
- Circular economy:
  - Reduce, Reuse
- Active Energy Solutions
- Greater Productivity
- New supply chains with better integration
- Embedded supplier
- De-risking investment



**Community**



**Neighbourhood**



**Home**



**The home is the  
point of delivery**

## Adaptive smart working and living environments supporting active and healthy ageing

**work**

Production  
Management  
Remote  
work  
The Virtual  
office

**leisure**

Exercise  
Entertainment  
Play  
Rest  
Relaxation

**The home  
is the point  
of delivery**

**care**

Medical  
services  
Social care



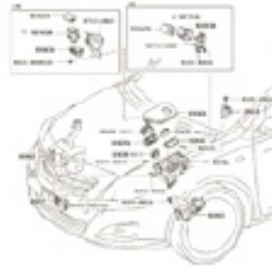


## How Platform Approach transform Society and Industry

Component    ♦♦♦♦➤    Platform    ♦♦♦♦➤    Product



Engine block



Chassis



Car



Shipping container



Global freight infrastructure

Low cost, reliable  
global trade + supply  
chains



Uber



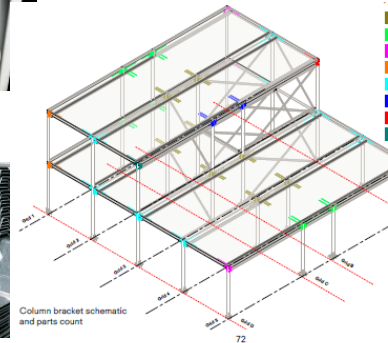
iPhone

Peer-to-peer ride  
sharing, food delivery  
and transportation  
network

# How Tata Steel and the AAA are working on a Platform Approach to transform Neighbourhoods of the Future

## What a Platform Approach does:

- Adds value and improves productivity by moving onsite work in to pre-assembly
- Standard components in length, size, shape and/or connection details allows for better alignment and understanding
- Quality of service, finish, availability with a range of personalised features **allow for choice and differentiation**



schools



residential



hospitals

## What a Platform Approach isn't:

- Standard is not Commodity
- Everything is the same
- Lowest common denominator



## Why Steel?

- The most recycled material in the world
- Steel is not consumed because once made, it will be used again and again
- A long-term investment that does not go to waste
- Light, yet strong: an efficient material
- A basic building-block of modern society
- Steel enables sustainability

THE LIFE CYCLE OF STEEL



Image courtesy of the World Steel Association

**Steel is the only truly cradle-to-cradle recycled material**







**You cannot get a plant to grow by pulling on it. We need have the right conditions, professional approach and materials to see growth and success**

## Neighbourhoods for the Future : Agile Ageing Alliance and Tata Steel

**Economic growth developed from providing the right environment – attracting the right partners to deliver sustainable solutions appropriate for an important and value creating demographic of UK Society**



## The FUTURE needs Us NOW



The Agile Ageing Alliance and Tata Steel are looking for Partners to join us now to collectively work together on this exciting beneficial work