



27<sup>TH</sup> MAY 2020 | **THE FUTURE OF MULTIGENERATIONAL NEIGHBOURHOODS LEADERS FORUM**



Image courtesy of Gensler



In association with



# Assistive technology think tank

**George Crooks OBE**, Chief Executive, Digital Health and Care Institute

**Faith la Grange**, Director, Regional & Local Government Microsoft

**Paul Quinn**, Director of Regeneration, Clarion Housing

**Matt McCann**, CEO and Founder, Access Earth

**Karen Holden**, Founding Partner, Director, A City Law Firm

**Meryl Davies**, CEO, Reengage

**Simon Bayliss**, Managing Partner, HTA Design LLP

**Cynthia Bullock**, Deputy Director, ISCF Ageing Society Challenge

**Victoria Leesam**, Senior Specialist Investments, Homes England

**Clive Gilbert**, Policy Manager for Assistive Technology, Policy Connect

 @agileageing @isostandards  agileageingalliance #agileageing #bettertogether

THE AAA ISO FUTURE OF MULTIGENERATIONAL NEIGHBOURHOODS LEADERS FORUM | 27<sup>TH</sup> MAY 2020



In association with



# Founder & Managing Director Karen Holden



# Technology versus Privacy

## The Risks

Inherent vulnerabilities  
& Abuse

Selling – hacking –  
processing vulnerable  
people

Storage of data – its use  
Right to privacy

## Protection Controls

GDPR/DPA 2018  
Cyber security  
Other regulations

## Tech solution

Designers build in protections &  
think strategically about data  
protection  
Think about consent,  
transparency and knowledge.

## Smart Living



AI advancement; sensitive data  
around health; smart devices - TV  
to Fridge to car to actual house.  
Homes of the Future and  
expectations around data

## Regulators



Collaboration with regulators  
e.g. sandboxing (e.g. ICO)  
How can they work with tech –  
Covid-19 responses





# The Law keeping up with technology

## Centuries of case law

Technology advances quicker than the law

Challenges for regulators – how can this practically be addressed?

### **Legal system is ROBUST & ADAPTABLE to new innovation**

Fundamentally based on ethics & morals.  
Underlying rules and principles applied to new tech and new issues

## Human error

Infringements are inextricably tied to human nature.

Whose ethics do we use?

Are technological solutions possible?

Issues : Contracts using blockchain  
Data processed by AI



# Ownership

Technology  
will  
continue  
to shape our  
society



Digital Assets  
Virtual IP  
Tokens & currencies

Value/trace/own/tax/regulate  
Divorce/Will/Gifts/Insolvency/  
transfers

Regulators or designers who  
are setting the parameters?

Whose rules – international?  
the state? A tech giants?  
Who is listening to the users  
and consumers?

Whose Moral Compass do we use?  
Conglomerates control advancing tech – is this right?  
Whose interests are being protected and how?  
Influence of commerce and stakeholders





*‘This advancing technology will shape our lives  
And we must all have a voice in it ‘*





# ISO Ageing Societies Forum

Making a case for multigenerational neighbourhoods



Simon Bayliss / HTA Design / @SiBaylius



# Homes designed for all



# Space, light, comfort





# Biophilic landscapes

hta





# Planning new neighbourhoods





# Modern methods of construction





# Beautiful, functional interiors



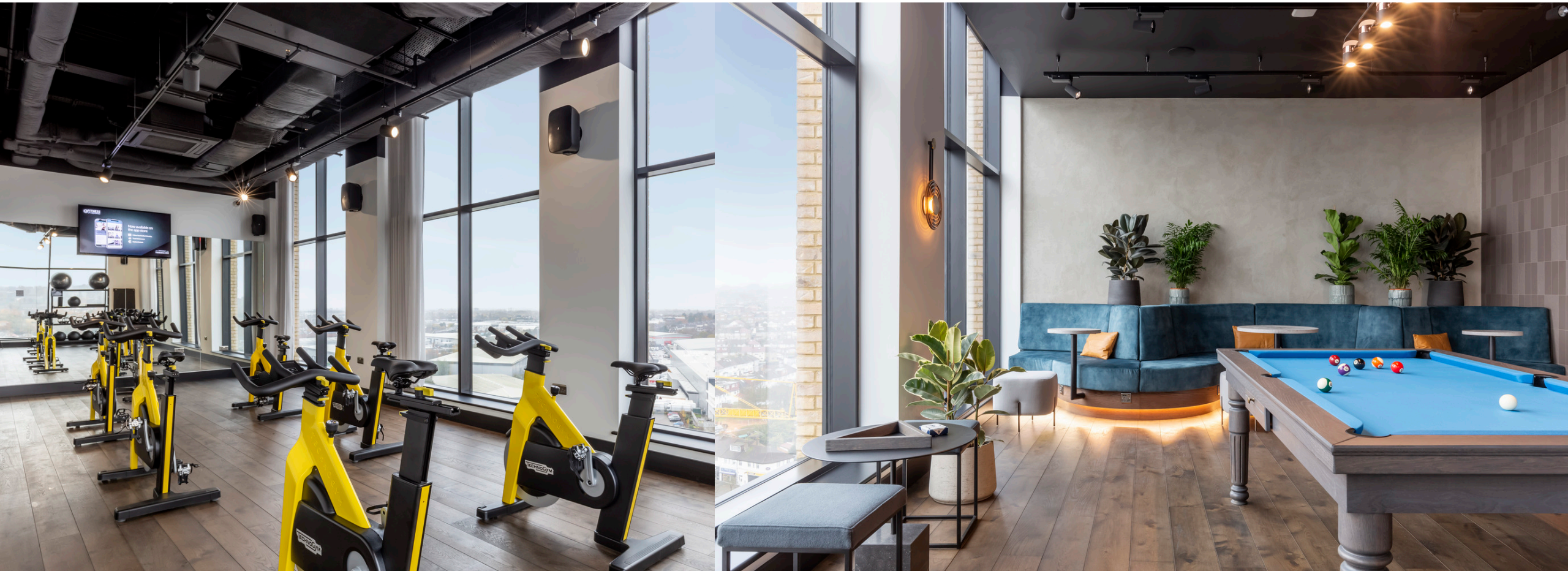


# Shared communal amenities



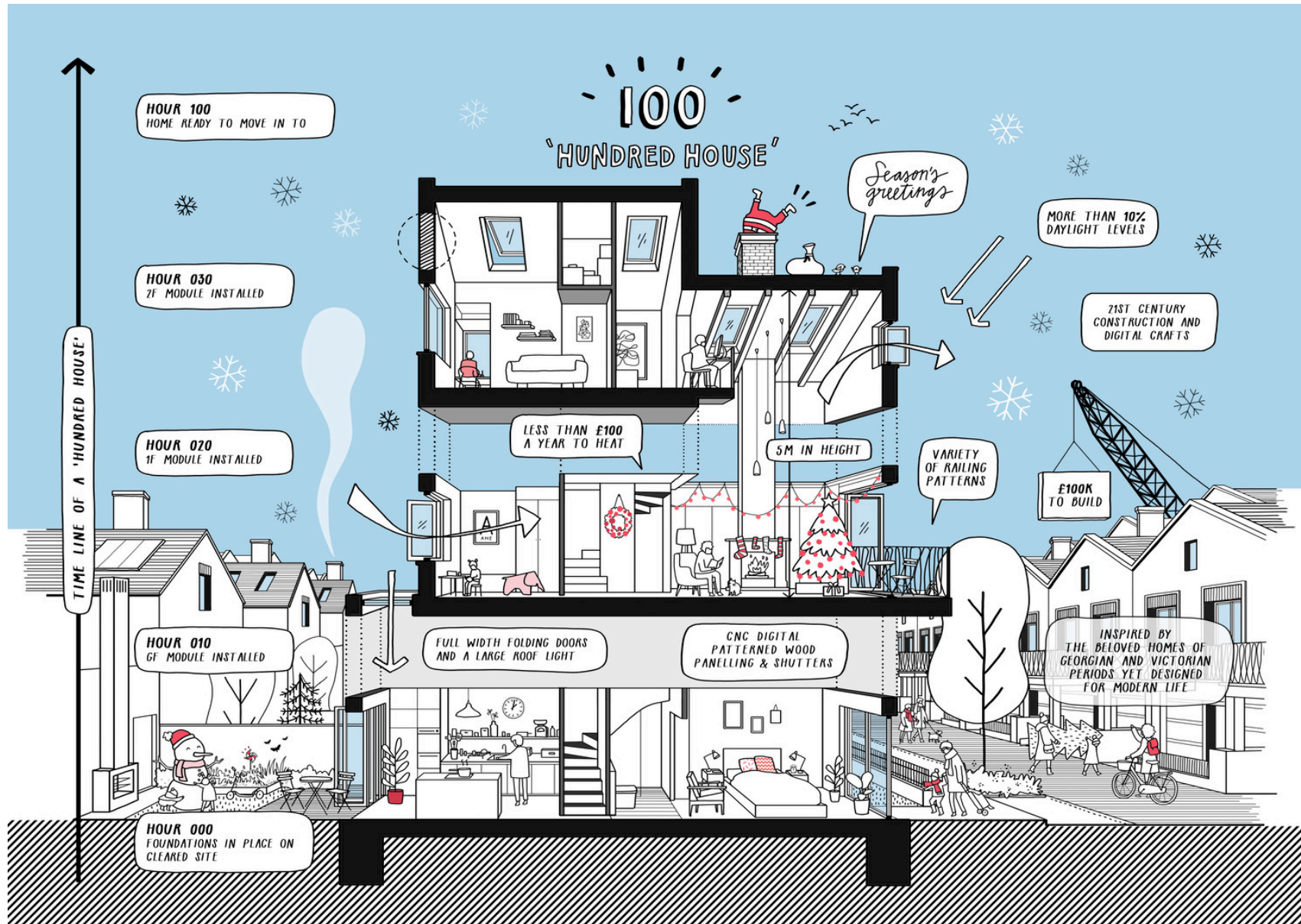


# A managed supportive environment





# Flexible, adaptable & functional





# Contemporary craftsmanship





# AAA/ISO: Setting the standard







Homes  
England

Making homes happen

# Multi-Generational Neighborhoods

Victoria Leesam Nov 2019



# Inclusive Housing



- 84% of Disabilities are Acquired
- 1 in 5 people have a disability in the UK



# Adapting housing over generations





# Specialist Housing – Care and Support





# Building Regulations Part M4

The Building Regulations 2010

Access to and use of  
buildings

APPROVED DOCUMENT

M

## Volume 1: Dwellings

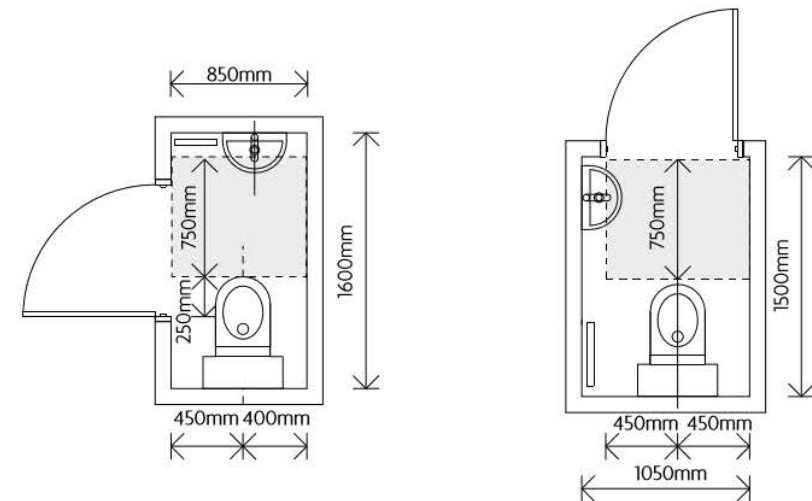
M4(1) Category 1: Visitable dwellings

M4(2) Category 2: Accessible and adaptable dwellings

M4(3) Category 3: Wheelchair user dwellings

ONLINE VERSION

M4(1)



Notes:  
1. Dimensions for illustration purposes only  
2. Doors should open outwards.

Diagram 1.4 Examples of WC/cloakrooms

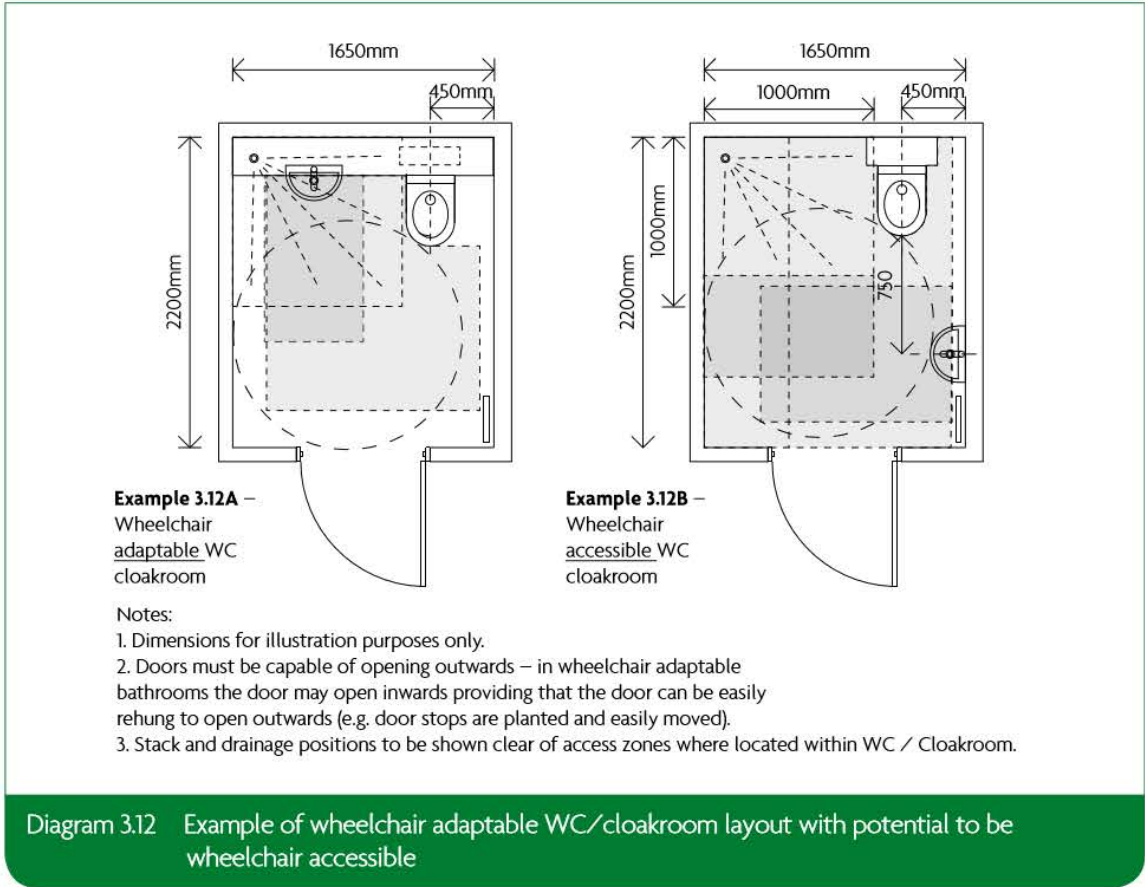
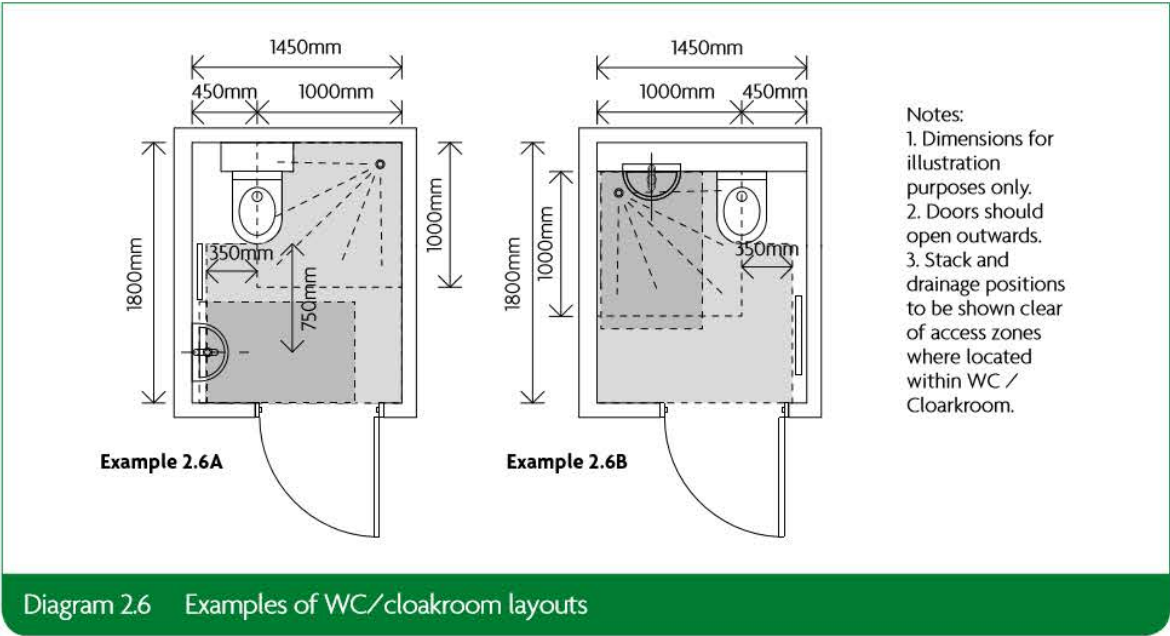


# Current optional standards Part M4 (2&3)

ONLINE VERSION

M4(2) M4(3)

ONLINE VERSION





# Good Neighborhoods – Good design



Bradbury House 2015



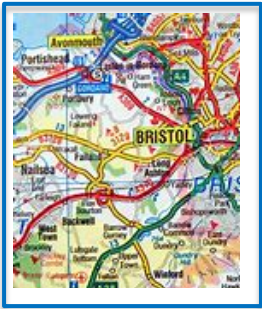
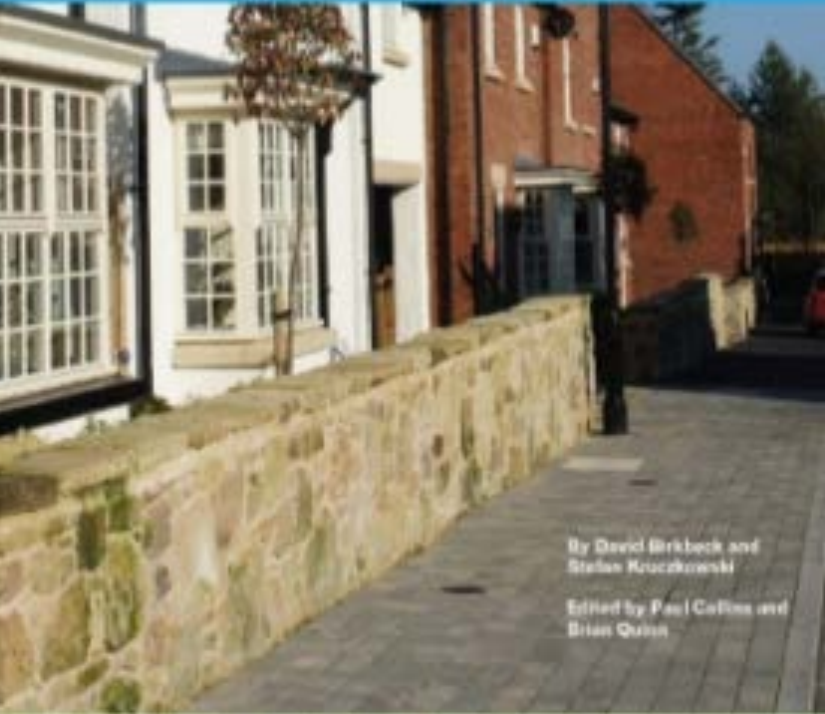


# Good Neighborhoods – Good design

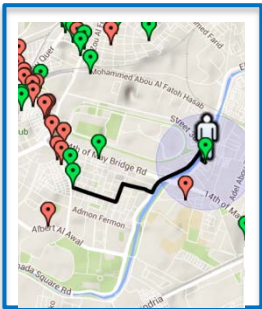




# Building for Life 12



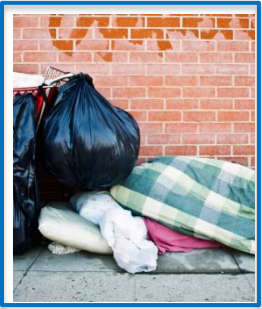
Q1 Connections



Q2 Facilities & services



Q3 Public transport



Q4 meeting local housing requirements



Q5 Character



Q6 Working with the site and its context



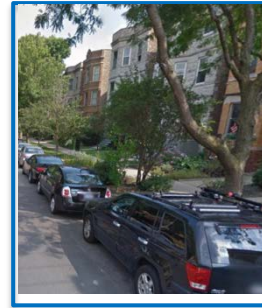
Q7 Creating well defined streets and spaces



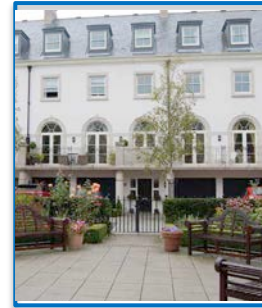
Q8 Easy to find your way around



Q9 Streets for all



Q10 Car parking



Q11 Public and private spaces



Q12 External storage and amenity space



# How do we prove good design before we build it?





Presented by

Victoria Leesam



# Policy Connect

- A cross-party think tank
- Dedicated to working with public, private and third sector organisations to improve public policy through parliamentary groups and commissions
- I manage the All-Party Parliamentary Group for Assistive Technology - otherwise known as the APPGAT



# THE AAA ISO FUTURE OF MULTIGENERATIONAL NEIGHBOURHOODS LEADERS FORUM

27<sup>TH</sup> MAY 2020

Q&A

 @agileageing @isostandards  agileageingalliance #agileageing #bettertogether

THE AAA ISO FUTURE OF MULTIGENERATIONAL NEIGHBOURHOODS LEADERS FORUM | 27<sup>TH</sup> MAY 2020



In association with  
 Microsoft