

TATA STEEL



Matt Teague
Architect and Project Manager
Tata Steel Construction

Building for the Future



Progress?



Progress?



Actual Tudor- c. 1600



Mock Tudor- c. 1930



Mock Tudor- c. 2010

Progress?



Working from home Spitalfields c. 1800



Working from home Spitalfields* c. 2020

*Might not actually be Spitalfields

NEIGH BOUR HOODS OF THE FUTURE

CREATING A BRIGHTER FUTURE FOR OUR OLDER SELVES
AN AGILE AGEING ALLIANCE PRODUCTION MADE POSSIBLE BY TATA STEEL

The Forge | Land Securities



- The Forge will be the first Net Zero Carbon development being built by Land Sec.
- It comprises two buildings, one c.90,000 sq ft and the other c.40,000 sq ft,
- Office 1.0 is a 'test case' to adopt Design for Manufacture and Assembly (DfMA) into Land Sec's commercial and residential portfolio
- Through design development the building has resulted in a 19.4% reduction in embodied carbon emissions (against typical build baseline).
- Overall, the project is achieving a 22 per cent reduction in embodied carbon (compared with the baseline).

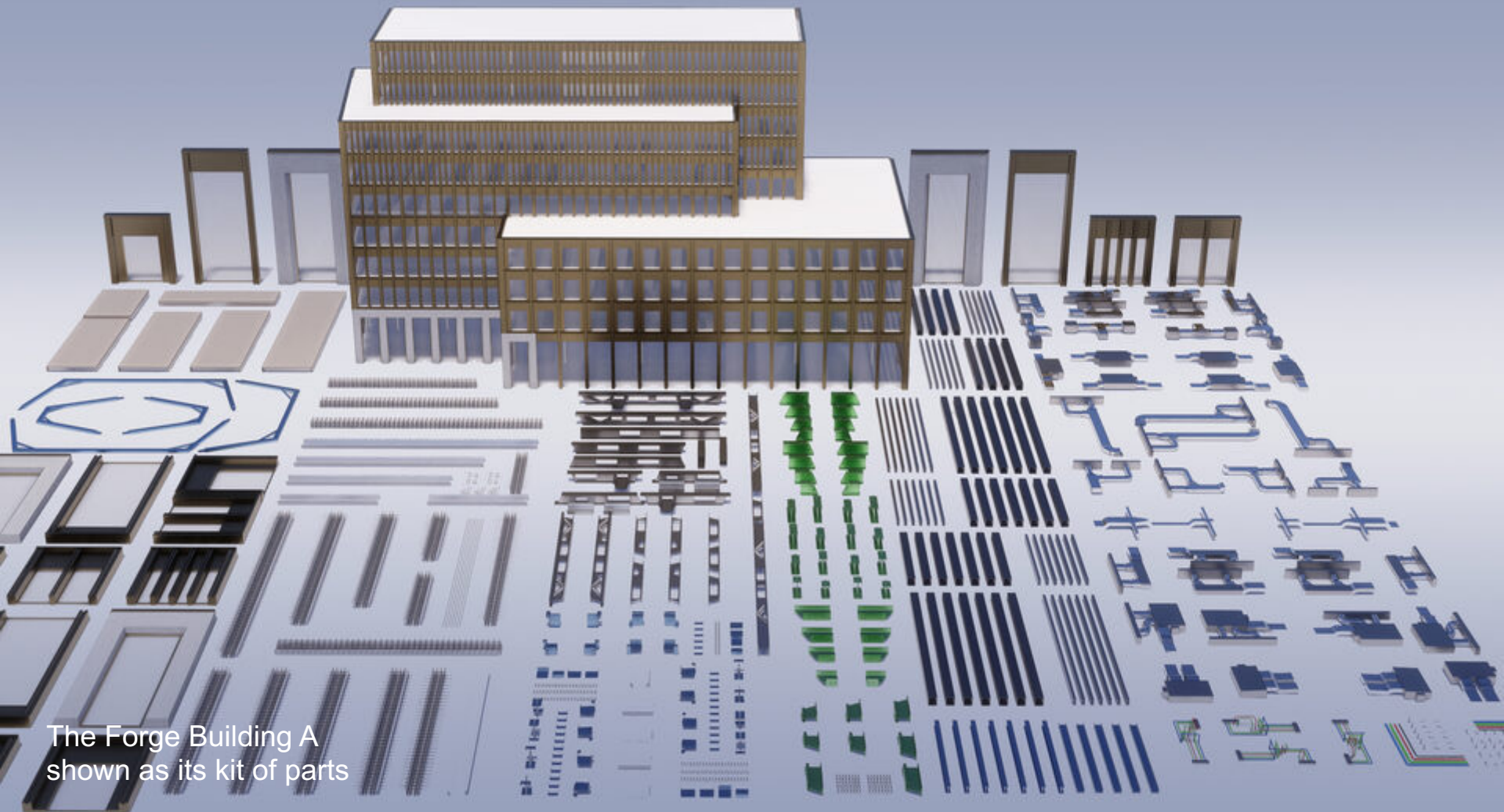
 Bryden Wood

DAM STRUCTURES
STEELWORK SOLUTIONS

**Sir Robert
McALPINE**


Landsec

 mace



The Forge Building A
shown as its kit of parts

15 minute neighbourhood



**800
metres**



Data

Security & Access Controls



Fire Alarm System



Lighting System



HVAC System



Parking Lot



Digital Signage



Integrated CC TV Cameras



Smart Energy Meters



Environmental Controls Systems



Multi Sensors Systems



Event Monitoring & Notification



Intercommunicate between Systems



Progress



Robotic bricklaying



3D printed concrete



Remote demolition

